

General Specifications

GS 36J04A10-01E

NTPP001, NTPP002, NTPP003,
NTPP004, NTPP005, NTPP006,
NTPP007, NTPP008, NTPP009



Exaquantum Plant Information Management System

■ GENERAL

Exaquantum is a Plant Information Management System (PIMS) product that provides business benefits to users in the Hydrocarbons, Chemicals, Power & Utilities, Pulp & Paper and many other industries. The main function of Exaquantum is the acquisition of data from all facets of a business and the subsequent transformation of that data into easily usable, high-value, widely-distributed information. The data then becomes an integral part of the set of tools used by the business in vital decision-making processes.

Exaquantum supports rapid plant-related deployment, making the software easy to implement within plant-specific operational environments. This allows information to be structured sensibly around the production calendars and shift patterns in the plant.

Exaquantum is the business intelligent gateway between the operational Process Control System (PCS) and the business Enterprise Resource Planning (ERP) system. It uses the latest, proven, Microsoft based open technology sets, designed to have low administration costs, and be robust to future IT trends.

Exaquantum comprises the following features:

- Process Control Systems Interface
- Data processing and storage
- Role Based View of Exaquantum resources
- Visualization – Exaquantum/Explorer and Web UI
- Multiple server support
- Data exposure via APIs/ODBC/OLE DB/OPC.

■ KEY FEATURES

● Process Control Systems Interface

Exaquantum primarily uses embedded OPC clients to access PCS data with the following OPC servers.

Data Access – OPC DA 2.05a compliant

- Yokogawa Exaopc for CENTUM VP, CS 3000, CENTUM CS, STARDOM and DARWIN.
- Yokogawa Exaopc-RD Redundancy package (*1)
- Yokogawa FAST/TOOLS SCADA
- OPC servers for Honeywell TDC 3000, Honeywell PHD, Foxboro I/A series, Emerson DeltaV and Modbus, etc.

Alarms and Events Access – OPC A&E 1.1 compliant

- Yokogawa Exaopc for CENTUM VP, CS 3000, CENTUM CS.
- Yokogawa Exaopc-RD Redundancy package. (*1)
- OPC A&E Servers from other suppliers.

Historical Data Access – OPC HDA 1.1 compliant

- Yokogawa Exaopc for CENTUM VP, CS 3000, CENTUM CS.
- Yokogawa Exaopc-RD Redundancy package. (*1)
- OPC HDA Servers from other suppliers.

Text Files

Import and export data in Exaquantum-defined ASCII format.

*1: When applying Exaquantum with Exaopc-RD, please contact Yokogawa representatives.

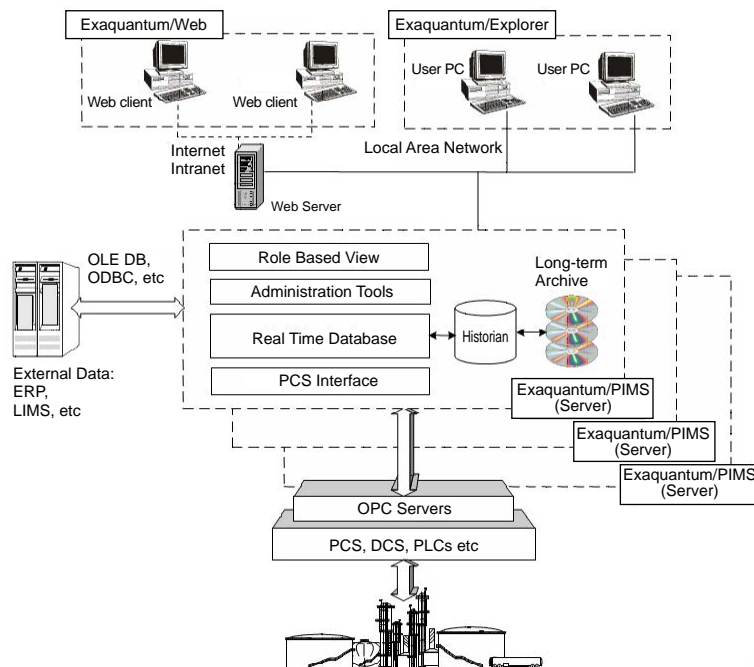


Figure: Exaquantum Overview

F01E.ai

● Data Processing and Storage

The Exaquantum Real Time Data Base (RTDB) provides tag-based, real-time process data to be utilized in various business application software. The data acquired to the RTDB can be optimized through the following functions:

- **Quality Codes.** Users can judge the validity and reliability of data at a glance. Exaquantum assigns quality codes to data that is transparent to data users. Quality Codes do not count as licensed tags.
- **Aggregations.** Basic statistical functions (minimum, maximum, mean, standard deviation, summations, differential summation and spot value) are calculated and stored using tag values over defined (hour, day, month or user-defined) time periods. Aggregations do not count as licensed tags.
- **Custom Aggregations.** Users can specify custom aggregation periods using the Exaquantum Excel Add-In or API.
- **Function Block.** Users can configure relational complex data processing groups as function blocks allowing easy and repeated use of data.
- **KPI Calculations.** Users can script simple or complex logic to create raw or aggregated values using calculated tags.
- **Exaopc HDA.** Following an Exaquantum shutdown period, Exaquantum can access Exaopc's (R2.10 or later) HDA server to retrieve missing process data (allowing aggregated and calculated values to also be generated) and Alarms & Events (A&E). For a LAN interruption, Exaquantum can access Exaopc's (R3.10 or later) HDA server to retrieve missing process data.
To enable Exaopc History Catch-up functionality, it is necessary to install Exaopc on a separate server to that used by Exaquantum. The specification of the Exaopc server must be suitable for History Catch-up to perform properly.

Exaquantum also contains a Historian that securely stores large amounts of process data. Its powerful and fast storage and retrieval capabilities means there is virtually no limit to the amount of historical data that can be available online. Automatic archiving and deletion permits older data to be removed from the system.

● Role Based Name Space (RBNS)

Exaquantum can be configured to provide each user with their own Microsoft Windows group-personalized folder hierarchy and naming convention view of Exaquantum process data when using the Exaquantum Data Selector within Exaquantum/Explorer, Exaquantum/Web or the Exaquantum Excel add-in across all Exaquantum servers.

The Exaquantum administrator controls read and write access to Windows defined user groups. Read-only access allows process data to be viewed on displays by users. Write access allows users to write data to Exaquantum on a function block or tag basis.

● Multiple Servers Support

Multiple Exaquantum servers can seamlessly integrate their process data together to allow visualization on a single display screen or report. For example, a display screen may consist of a textual tag field showing data from one Exaquantum server and a trend showing data from another Exaquantum server.

A Primary and Standby Exaquantum server is designated to contain the Role Based View information accessed by the users.

If Exaquantum calculation tags require inputs from tags located on other Exaquantum servers then this functionality (cross server calculations) is available by purchasing the Exaquantum Open Interface (NTPP007).

All Exaquantum servers must contain the same software revision.

● User Interfaces

Exaquantum provides the following user interfaces.

Exaquantum/Explorer

For users who need to create standard, pre-configured, fixed or ad-hoc display screens, the following Exaquantum/Explorer design tools are available:

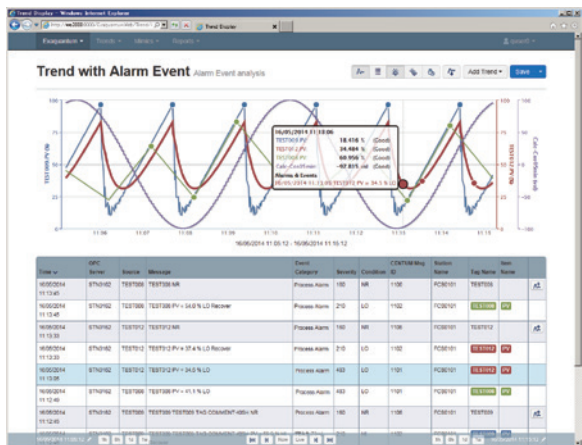
- Graphics configuration and runtime support, with components such as Trends, X-Y Plots, Tubular Trends, Data Entry Grid, Data Write Back, Alarms and Events viewing, Excel Viewer and Web Browser.
- Advanced features such as Report Times, Scripting, Navigation and Data Parameterization.
- Excel Add-in for reporting and analysis of Exaquantum data.

Exaquantum/Explorer can be installed on a CENTUM HIS.

Exaquantum/Web

For users who want to take advantage of the latest Microsoft Internet Explorer Web technology deployed on their PCs. Exaquantum/Web supports the following features.

- Plant graphics containing dynamic plant views created with the Exaquantum Web Graphics Editor or imported and converted Yokogawa DCS graphics.
- Simple to use Trending, with a maximum of 4 graphs per page, featuring:
 - Time range selection
 - Zoom
 - Trend Legend.
- Users can create ad-hoc Trends which can be saved for subsequent re-use and shared with other users.
- Trends can display alarms & events for process data analysis.
- Display pre-configured Word, Excel, PDF, etc. reports.
- Excel Add-in for reporting and analysis of Exaquantum data in the Web environment which is compatible with the Exaquantum/Explorer Excel Add-In.



F02E.ai

Figure: Overlapped Trend with Alarms & Events

Exaquantum Graphic Conversion Tool

This tool converts CENTUM VP, CS 3000 and CS 1000 graphics into Exaquantum/Explorer and Exaquantum/Web graphics.

● **Data Availability via ODBC & OLE DB**

Exaquantum raw, aggregated and calculated values, along with A&E, can provide valuable information to 3rd party application packages. The Exaquantum ODBC and OLE DB interfaces can be used to access this information.

These two interfaces allow users to view a snapshot of Exaquantum data using minimal programming.

● **Data Access through OPC**

Application packages can access Exaquantum data via the Exaquantum OPC server, which supports OPC DA 2.05a and HDA 1.1.

● **PI OPC Open Interface**

Exaquantum process data and alarms & events data can be read by a OSIsoft PI System. Tag definition data can be exported from Exaquantum, using Excel or text files to enable effective engineering of the PI System. PI must have an equal number of tags to map Exaquantum data.

Note: The number of tags required for PI is the total of Exaquantum's instantaneous values and all the aggregation items.

Note: If the PI OPC Open Interface is required, please contact your local Yokogawa representative in advance of implementation as some configuration is required.

■ **BUSINESS BENEFITS**

The business benefits of making information available are both diverse, and industry-specific. Some of the typical benefits are described below.

● **Information Distribution**

The availability of large amounts of data available on the desktops of many users increases efficiency. This increase is a result of fast and easy access to many different types of data. RBNS further increases efficiency, by presenting users with just the data that is pertinent to them. When Internet and Intranet access to data is also taken into account, the benefits are even more apparent.

● **Enhancing PCS Data**

Many data sources have limited scope for enhancing their own data. Exaquantum can enhance PCS data with a set of built-in aggregations. For example, users in some hydrocarbon industries will find one hour averages more useful than raw data. Exaquantum can further enhance the raw and aggregated data with custom calculations.

● **Enhancing Data from Multiple PCSs**

Exaquantum is able to refine the data from disparate data sources into high-value business information, often known as Key Performance Indicators (KPIs). For example, tonnage of a product can be calculated from a flow measured by a PCS and a density measurement provided by a Laboratory Management Information System (LIMS).

● **Time Resolved Alarm and Event History**

Exaquantum can read, historize and display alarms & events received from compliant OPC A&E interfaces, which can be presented in time order for analysis.

For industries where un-planned shutdowns follow a complex series of consequential events, this facility can be very valuable in identifying the original cause of the shutdown.

● **An Integrated Platform**

The Exaquantum philosophy of open access to data and information enables easy configuration and integration of application software.

Typical data flows between applications are the passing of:

- Sample results transferred from LIMS to Exaquantum can be used for displays, reports and the calculation of KPIs.
- Inventory and QA data from Exaquantum to an ERP system to optimize planning and scheduling campaigns.
- Condition monitoring data from Exaquantum to maintenance software to automatically initiate repairs and optimize Planned Maintenance Management schedules.

● **Long Term History**

Long-term historization of plant data by Exaquantum creates the opportunity for further analysis to take place.

Example 1: A system can be set to automatic or manual mode. Analysis of plant history can prove the success of the control settings and monitor their ongoing usage.

Example 2: A LIMS value may indicate a trend leading towards an out-of-spec product. Operators and engineers have the opportunity to implement a correction before waste products are created.

Example 3: The flow meter on a main product stream may be inaccurate by several percent indicating leaks or measurement errors. The measurements from other flow meters on connected streams can be used to identify an alternative, accurate measurement for the main product stream.

● **Event Triggered Batch Processing**

Batch applications can be notified automatically if any steps or changes occur in the process. These changes may originate from direct process measurements but they can also be the result of Exaquantum aggregations or calculations. Exaquantum is the standard route for any application that requires event notification from any PCS, thus minimizing development costs.

● **IT Security (R2.60 or later)**

Legacy and Standard security levels are available allowing compliance with system security requirements.

● **Microsoft SQL Server 2012 (R2.85 or later)**

Exaquantum installation includes Microsoft SQL Server as an Integrated Value Added Solution.

Note: Optionally supplied with SQL Server 2008 Express for changing the compatibility of archives created with SQL Server 2000.

● **Exaopc Product Security Support (R2.70 or later)**

Exaquantum has adopted the same security function as Exaopc R3.70 (*1) which tightens the security for accessing process control systems (such as CENTUM).

*1: Exaopc (R3.70 or later) can set limits on data access for each user account connecting to Exaopc.

■ **SYSTEM SPECIFICATION**

Item	Specification (*1)
Maximum number of tags	200,000 tags/multi-servers (*2) 100,000 tags /single-server
Throughput of Exaquantum (Maximum data acquisition)	100,000 data/minute
Data item gathering interval (minimum)	1 second (*4)
Data item data historization interval (minimum)	1 second (*4)
Number of concurrent users (Exaquantum/Explorer)	Up to 64/server
Number of concurrent users (Exaquantum/Web)	Subject to the configuration of the Exaquantum Web Server(s)
Number of connected OPC servers per Exaquantum server	16/server (*3)

- *1: A suitable hardware platform and infrastructure (network) must be chosen to support the required sizing.
- *2: For a maximum of five (5) Exaquantum servers. For systems larger than 200,000 tags, contact your Yokogawa representative.
- *3: When using tags from other Exaquantum servers in calculations, then the Exaquantum servers are included in the number of connected OPC servers.
- *4: Depends on OPC server performance.

■ OPERATING ENVIRONMENT

● Hardware Operating Environment

The minimum requirements for the hardware and software operating environments are described in the tables below. Please contact the Yokogawa representative for large or non-standard systems requirements.

Exaquantum Server (real-time and historical database)

CPU: Intel x64 or x86 architecture as shown below

No. of tags	Required CPU Specifications
Less than 20,000 tags	Xeon dual core 2 GHz or higher
20,000 - 50,000 tags	Xeon dual core 3 GHz or higher
More than 50,000	Xeon quad-core 3 GHz or higher

Main memory capacity

No. of tags	Operating System	Main Memory capacity
Less than 20,000 tags	Windows Server 2008 R2 Standard (SP1) 64-bit Windows Server 2008 Standard (SP2) 32-bit	4 GB or more
	Windows Server 2012 Standard 64-bit	8 GB or more
20,000 tags or more	Windows Server 2008 R2 Standard (SP1) 64-bit	6 GB or more
	Windows Server 2008 Standard (SP2) 32-bit	6 GB or more
	Windows Server 2012 Standard 64-bit	10 GB or more

Disk capacity: Depends on the process data scan rate and retention period.

The disk free space required for installation is:

- System drive: minimum 4 GB (*1)
- SQL server installed drive: minimum 6 GB

*1: 10 GB or more empty space in main memory is required when a SQL server is installed on a system drive.

Web Server

CPU: Intel x64 or x86 architecture Xeon dual core 2 GHz or higher

Main memory capacity

Operating System	Main Memory capacity
Windows Server 2008 R2 Standard (SP1) 64-bit Windows Server 2008 Standard (SP2) 32-bit	2 GB or more
Windows Server 2012 Standard 64-bit	8 GB or more

Disk capacity: 2 GB or more

The above hardware environment is suitable when the Exaquantum server and Web server are installed on different servers. Please add the required capacity together if both are to be installed on a single server.

Exaquantum User PCs

CPU: Equivalent to Intel Pentium 2GHz or Core i3 dual core 1.33GHz or higher

Supported OS	Main RAM Memory Capacity
Windows Vista	512 MB or more
Others except Windows Vista	2 GB or more

Disk capacity: 2 GB or more, 3 GB or more (in case of using MS Excel)

CRT resolution: 1024x768 or better

Display colors: 65,536 or more

Note: When an Exaquantum client is installed on a HIS, please follow the operational environment specified by the standard operation and monitoring function (LHS1100, LHM1101).

PI OPC Interface PC

CPU: Equivalent to Intel Pentium 2.8 GHz multiple core CPU or Core i3 dual core 2.50 GHz or higher

Main memory: 2 GB or more

Disk capacity: Requires following free space for installation.

System drive: Minimum 2 GB required (40 GB recommended)

● **Software Operating Environment**

The packages contained in the Software Specification may support either '64-bit' or '32-bit' versions. If neither '64-bit' or '32-bit' is listed then only the 32-bit version is supported.

Hardware	Software Specification
Exaquantum Server	<Operating System> <ul style="list-style-type: none"> • Windows Server 2012 Standard 64-bit (*1) • Windows Server 2008 R2 Standard (SP1) 64-bit (*1) • Windows Server 2008 Standard (SP2) 32-bit <Other Software> <ul style="list-style-type: none"> • Microsoft SQL Server 2012 (SP1) (*2) • Microsoft Excel or Office 2010 (SP2)/2013 (*5) • Microsoft Internet Explorer 8.0/9.0/10.0 • Microsoft Expression Web 4 (SP2) (for designing Web pages) • Adobe Reader 9.5/10.1/11.0 (*3)
Exaquantum Web Server	< Operating System > <ul style="list-style-type: none"> • Windows Server 2012 Standard 64-bit (*1) • Windows Server 2008 R2 Standard (SP1) 64-bit (*1) • Windows Server 2008 Standard (SP2) 32-bit < Other Software > <ul style="list-style-type: none"> • Microsoft Internet Explorer 8.0/9.0/10.0 • Internet Information Services (IIS) • Adobe Reader 9.5/10.1/11.0 (*3)
User PCs for Exaquantum/Explorer, Exaquantum/Web Client	<Operating System> <ul style="list-style-type: none"> • Windows Server 2012 Standard 64-bit (*1) • Windows Server 2008 R2 Standard (SP1) 64-bit (*1) • Windows Server 2008 Standard (SP2) 32-bit • Windows Vista Business Edition (SP2) 32-bit • Windows 7 Professional 64-bit (*1) • Windows 7 Professional 32-bit • Windows 8 Pro, Windows 8.1 Pro 64-bit (*1) • Windows 8 Pro, Windows 8.1 Pro 32-bit <Other Software> <ul style="list-style-type: none"> • Microsoft Excel or Office 2010 (SP2)/2013 (*5) • Microsoft Internet Explorer 8.0/9.0/10.0/11.0 • Microsoft Expression Web 4 (SP2) (for designing Web pages) • Adobe Reader 9.5/10.1/11.0 (*3)
PI OPC Interface PC (*4)	<Operating System> <ul style="list-style-type: none"> • Windows Server 2012 Standard 64-bit (*1) • Windows Server 2008 R2 Standard (SP1) 64-bit • Windows Server 2008 Standard (SP2) 32-bit • Windows 7 Professional (SP1) 64-bit (*1) • Windows 7 Professional (SP1) 32-bit • OPC Interface to the PI System 2.3.20.9 • OPC HDA Interface to the PI System 1.4.3.30

- *1: Exaquantum is a 32-bit application that can be installed with the WOW64 emulation environment provided with the 64-bit OS.
- *2: SQL Server runtime version is bundled with Exaquantum. Optionally supplied with SQL Server 2008 Express for changing the compatibility of archives created with SQL Server 2000.
- *3: Adobe Reader is required to browse Exaquantum R2.50 or later instruction manuals.
- *4: PI server's revision must be 3.4.370.x or higher.
- *5: Supported Editions of Excel 2013 are listed below (Volume License Editions):
 - Excel 2013
 - Office Standard 2013
 - Office Professional Plus 2013

● **Co-existence or combination of Exaquantum and other solution-based software packages (SBP) (*1)**

The definition of terms 'co-existence' and 'combination' is as follows:

Co-existence: Exaquantum and other SBP products reside on the same PC.

Combination: Exaquantum communicates with Exaopc or HIS OPC over a LAN network.

*1: Other SBP products include Exaopc, Exapilot, Exaquantum/Batch, Exaplog, Exasmoc and Exarqe.

● **Combination of Exaquantum and Exaopc OPC interface package via network**

● Exaquantum can be connected with Exaopc OPC interface package R3.10 or later.

● Exaquantum can be connected with Exaopc OPC interface package (for HIS) R3.05 or later.

Note: For detailed information, refer to GS 36J02A10-01E NTPF100 Exaopc OPC interface package. For the combination of Exaquantum with Exaopc-RD, please contact Yokogawa representatives.

Note: The following Revision Numbers are required to gather CAMS Alarms & Events:

- Exaopc R3.72
- CENTUM VP R5.03.20

● **Restrictions in Co-existence of Exaquantum and other SBP products**

Exaquantum \ SBP products	Server	Client
Server (PIMS or Web servers)	Table 1	Table1
Client	Table 2	Table 2

Note: IT Security model must be set to the 'Legacy model' if Exaquantum and other SBP products are installed on a single PC.

Co-existence tables for Exaquantum with other SBP products are as shown below:

Table 1:

	Exaopc (R3.72)	Exapilot (R3.96)	Exaquantum /Batch	Exaplog (R3.40)	Exasmoc	Exarqe
Exaquantum (R2.85)	OK (*1)	OK	N/A	OK	N/A	N/A

Table 2:

	Exaopc (R3.72)	Exapilot (R3.96)	Exaquantum /Batch	Exaplog (R3.40)	Exasmoc (R4.03.20)	Exarqe (R4.03.20)
Exaquantum (R2.85)	OK	OK	N/A	OK	OK	OK

OK: Applicable N/A: Not Applicable

Note: Ensure other software operation environments such as OS are valid in addition to the variety of packages and their revisions.

*1: In the case where the PIMS server and Web server are combined, Exaopc can be also installed.

● **Restrictions in co-existence with HIS**

Exaquantum (R2.85)	CENTUM VP HIS (R5.03)	CENTUM CS 3000 HIS (R3.09)
Server	N/A	N/A
Client	OK	OK (*1)

OK: Applicable N/A: Not Applicable

Note: R2.85 IT security model for Exaquantum and other SBP products must be set to the same model when these packages are installed the same server.

Note: To ensure the variety of packages, their revisions and other operating environments such as the OS must be identical.

*1: For the co-existence of Exaquantum with CENTUM CS 3000 HIS, please contact Yokogawa representatives.

MODELS AND SUFFIX CODES

● Exaquantum/PIMS

An Exaquantum license authorizes tags up to the number specified by each suffix code. The number of Exaquantum servers varies depending on the number of tags. Each Exaquantum server supports a maximum of 100,000 tags with a maximum supported configuration of 5 Exaquantum servers (for up to 200,000 tags). Only one CD set is provided regardless of the number of servers, unless otherwise requested. Every client PC connected to Exaquantum/PIMS must be licensed.

		Description
Model	NTPP001	Exaquantum Data Server Package
Suffix Codes	-S	Basic Software License
	1	New Order (with Media)
	1	English version
	-00A5	500 Tags / 1 client
	-0001	1,000 Tags / 2 clients
	-0002	2,000 Tags / 4 clients
	-0003	3,000 Tags / 4 clients
	-0005	5,000 Tags / 4 clients
	-0007	7,500 Tags / 4 clients
	-0010	10,000 Tags / 10 clients
	-0020	20,000 Tags / 10 clients
	-0040	40,000 Tags / 10 clients
	-0060	60,000 Tags / 10 clients
	-0080	80,000 Tags / 10 clients
	-0099	100,000 Tags / 10 clients
-00B2	200,000 Tags / 10 clients	

● Exaquantum/Explorer (Per-Seat Licensing)

This is an optional package for adding additional per-seat users to the NTPP001 package.

Each license will allow an Exaquantum/Explorer client to be installed on a single client PC.

All Exaquantum/Explorer client PCs must be licensed even if Microsoft Terminal Server is used.

		Description
Model	NTPP002	Exaquantum Client Per-Seat Licensing Interface Package
Suffix Codes	- S	Basic Software License
	1	Always 1
	1	English version
	-□□	Enter additional client licenses in □□ (01-99)

● Exaquantum/Web Server

This is an optional package for the NTPP001 package. The number of Web servers required should be based upon the number of concurrent users because more than one Web server may be required to prevent overloading. Please contact your Yokogawa representative for assistance.

		Description
Model	NTPP003	Exaquantum Web Server Package
Suffix Codes	- S	Basic Software License
	1	Always 1
	1	English version
	-□□	Enter number of Web servers required in □□ (01-99)

● Exaquantum/Web Client (Per-Seat Licensing)

This is an optional package for adding web users, requiring both NTPP001 and NTPP003. Each Exaquantum/Web client PC connected to Exaquantum must be licensed. Each license allows an Exaquantum/Web client to be installed on a single client PC. However, web users are not bound to any one PC and therefore user profiles are used to control access to Exaquantum.

		Description
Model	NTPP004	Exaquantum Web Client Package
Suffix Codes	- S	Basic Software License
	1	Always 1
	1	English version
	-□□	Enter number of per-seat Web client licenses required in □□ (01-99)

● Exaquantum GUI Conversion Tool

This is an optional package that requires the NTPP001 package. It provides conversion of graphics files suitable for display within Exaquantum/Explorer and Exaquantum/Web screens.

		Description
Model	NTPP005	Exaquantum GUI Conversion Tool
Suffix Codes	- S	Basic Software License
	1	Always 1
	1	English version
	E	CENTUM VP/CENTUM CS 3000 Graphics to Exaquantum/Explorer format
	W	CENTUM VP/CENTUM CS 3000 Graphics to Exaquantum/Web format

● **Exaquantum/Explorer (2:1 Concurrent Licensing)**

This is an optional package for adding new or additional concurrent users to the NTPP001 package.

Each license will allow Exaquantum/Explorer to be installed on two clients PCs however only one PC can be connected to Exaquantum at the same time.

All Exaquantum/Explorer client PCs must be licensed even if Microsoft Terminal Server is used.

		Description
Model	NTPP006	Exaquantum User 2:1 Concurrent Licensing Interface Package
Suffix Codes	- S	Basic Software License
	1	Always 1
	1	English version
	-□□	Enter new or additional concurrent client licenses in □□ (01-99)

● **Exaquantum Open Interface**

This is an optional package for the NTPP001 package to allow access to Exaquantum process data via OPC DA 2.05a and HDA 1.1. This package is also required for each Exaquantum server providing tag data to Exaquantum calculated tags located in another Exaquantum server.

		Description
Model	NTPP007	Exaquantum Open Interface function
Suffix Codes	- S	Basic Software License
	1	Always 1
	1	English version
	-□□	Enter number of Exaquantum Open Interface function licenses in □□ (01-05)

● **Additional Exaquantum Server License**

This is an optional package to license Exaquantum servers within an Exaquantum multi-server environment.

		Description
Model	NTPP008	Additional Exaquantum Servers
Suffix Codes	- S	Basic Software License
	1	Always 1
	1	English version
	-□□	Enter number of new or additional Exaquantum server Licenses in □□ (01-04)

● **Exaquantum Additional Tags**

This is an optional for adding additional Exaquantum tags to the NTPP001 package.

		Description
Model	NTPP009	Exaquantum/PIMS Tags for Upgrade
Suffix Codes	- S	Basic Software License
	2	For Upgrade of 100,000 or less Exaquantum tags
	1	English version
Option Codes	/S□□□	Enter number of additional Exaquantum tags in groups of 1,000 until a maximum total of 10,000 tags are reached.
	/M□□□	Enter number of additional Exaquantum tags in groups of 1,000 until a maximum total of 20,000 tags are reached. This can only be ordered when the previous tier has been reached.
	/L□□□	Enter number of additional Exaquantum tags in groups of 1,000 until a maximum total of 100,000 tags are reached. This can only be ordered when the previous tier has been reached.
	/X□□□	Enter number of additional Exaquantum tags in groups of 1,000 until a maximum total of 200,000 tags are reached. This can only be ordered when the previous tier has been reached.

■ **ANNUAL MAINTENANCE CONTRACT**

This product is supplied with no Yokogawa warranty. Users are required to enter into an annual maintenance contract to receive maintenance service from the first year of the purchase onward. For more details of the maintenance service, please refer to the 'Maintenance Services for Solution-Based Software Package' (GS 36J20A10-01E).

● Exaquantum Maintenance Service

		Description
Model	NTMP001	Exaquantum Maintenance Service
Suffix Codes	- S	Annual Contract
	1	Always 1
	1	Always 1
	-A5	500 Tags / 1 client
	-01	1,000 Tags / 2 clients
	-02	2,000 Tags / 4 clients
	-03	3,000 Tags / 4 clients
	-05	5,000 Tags / 4 clients
	-07	7,500 Tags / 4 clients
	-10	10,000 Tags / 10 clients
	-20	20,000 Tags / 10 clients
	-40	40,000 Tags / 10 clients
	-60	60,000 Tags / 10 clients
	-80	80,000 Tags / 10 clients
-99	100,000 Tags / 10 clients	
-YY	When ordering using the Option Code (below)	
Option Codes	/S□□□	Enter number of additional Exaquantum tags in groups of 1,000 until a maximum total of 10,000 tags are reached.
	/M□□□	Enter number of additional Exaquantum tags in groups of 1,000 until a maximum total of 20,000 tags are reached. This can only be ordered when the previous tier has been reached.
	/L□□□	Enter number of additional Exaquantum tags in groups of 1,000 until a maximum total of 100,000 tags are reached. This can only be ordered when the previous tier has been reached.
	/X□□□	Enter number of additional Exaquantum tags in groups of 1,000 until a maximum total of 200,000 tags are reached. This can only be ordered when the previous tier has been reached.
	/UI□□	Enter number of Exaquantum/ Explorer Licenses in □□ (01-99).
	/UC□□	Enter number of Exaquantum/ Explorer 2:1 Concurrent Licenses in □□ (01-99).
	/WS□□	Enter number of Exaquantum Web server in □□ (01-99).
	/WC□□	Enter the number of Exaquantum/Web named user Licenses in □□ (01-99).
	/GE	Exaquantum GUI Conversion Tool (Exaquantum/Explorer format).
	/GW	Exaquantum GUI Conversion Tool (Exaquantum/Web format).
	/OP□□	Enter number of Exaquantum Open Interface in □□ (01-05).
	/ML□□	Enter number of Exaquantum multi-server Licenses in □□ (01-04).

■ TRADEMARKS

- Exaquantum, Exaopc and CENTUM are registered trademarks of the Yokogawa Electric Corporation.
- All other company names and product names mentioned in this General Specification are registered trademarks of their respective companies.