

■ The Problem

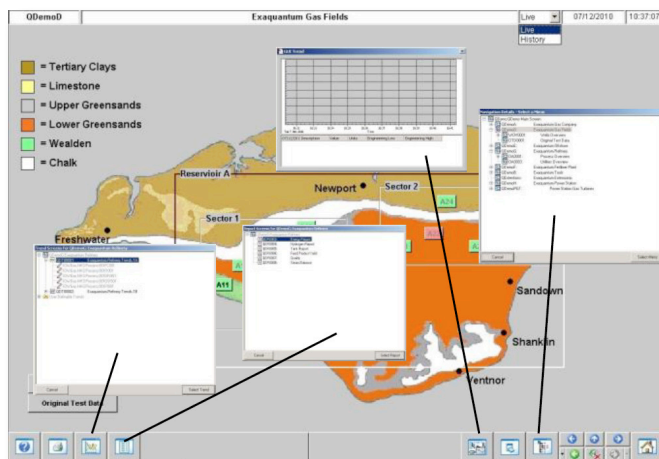
The ability to create a common graphical screen hierarchy and run-time features accessible by all authorized users, such as linked trend groups and report selections, is time consuming, inefficient and difficult to manage.

■ The Solution

The Exaquantum/GF (GUI Framework) for Exaquantum provides common user access facilities across all Exaquantum/Explorer screens. These screens can be accessed by supervisors and managers needing to view their plant's processes. Screen interrelationships and linked features such as access to screen specific Microsoft Excel reports and trends provide in-depth access to key information. Screens are grouped within a plant hierarchy to enable quick access to areas of concern with the ability to replay historical data.

■ Key Features

- The screen plant hierarchy is easy to configure and modify
- Analyze past plant activities by using the History Replay facility to control the time periods of trends and process data displayed on all screens
- User access to pre-configured trends assigned to the currently displayed screen
- User access to pre-configured Microsoft Excel reports assigned to the currently displayed screen
- Each user can configure up to 16 personal trends accessible from any Exaquantum/Explorer enabled PC
- Users can navigate directly to any graphic by selecting the required graphic from the hierarchal graphic list
- User efficiency is increased by being able to rapidly move between display screens via navigation (current and historical) buttons
- Drag & drop process data from the displayed screen and/or the Exaquantum Data Selector onto an always-on-top trend screen
- Ability to search for a mimic name
- Ability to print the currently displayed screen
- Help button available for on-line assistance



■ Hardware and Software Requirements

Tables: Minimum Hardware and Software Specifications

Component	Hardware Specification
Exaquantum/GF Server	As for the Exaquantum PIMS Server R2.85
Exaquantum/GF Clients	As for the Exaquantum/Explorer Client R2.85

Component	Software Specification
Exaquantum/GF Server	As for the Exaquantum PIMS Server R2.85
Exaquantum/GF Clients	As for the Exaquantum/Explorer Client R2.85

■ Models and Suffix Codes

Table: Exaquantum/GF Server License

	Product Codes	Description
Model	GMSCD03	Exaquantum/nHance Package: Exaquantum/GF
Suffix Codes	-S	Basic Software License
	1	New Order (with Media)
	1	English Version
	-S□□	Enter the number of Exaquantum/GF Server Licenses in □□ (01 - 99)
	-P□□	Enter the number of new or additional Exaquantum/Explorer per-seat user Licenses in □□ (01 - 99)
	-C□□	Enter the number of new or additional Exaquantum/Explorer 2:1 concurrent user Licenses in □□ (01 - 99)

Table: Exaquantum/GF Maintenance Service

	Product Codes	Description
Model	GMSCD80	Exaquantum/nHance Maintenance Service
Suffix Codes	-S	Annual Contract
	1	Always 1
	1	Always 1
	-3S□□	Enter the number of Exaquantum/GF Server Licenses in □□ (01 - 99)
	-3P□□	Enter the number of Exaquantum/Explorer per-seat user Licenses in □□ (01 - 99)
	-3C□□	Enter the number of Exaquantum/Explorer 2:1 concurrent user Licenses in □□ (01 - 99)

■ Trademarks

Exaquantum, Exaopc and CENTUM are registered trademarks of the Yokogawa Electric Corporation.

Microsoft's Windows family of operating systems, Word, Excel, Office 2010, Office 2013 and SQL Server 2012 are trademarks or registered trademarks of the Microsoft Corporation.

All other company names and product names mentioned in this general specification are registered trademarks of their respective companies.