

# General Specifications

## Model NTPC040 Exaquantum Report Manager



GS 36J40E10-01EN

### ■ PROBLEM

Plant personnel often require detailed analysis of data collected by their Exaquantum Historian and other database sources to identify problems, reduce plant maintenance and improve production.

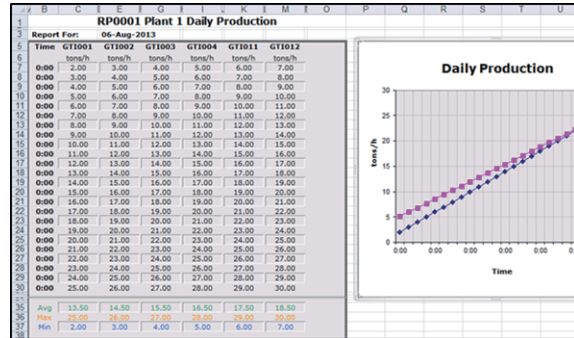
A key problem to performing this type of data analysis is the ability to retrieve large quantities of data from multiple sources into a single, easy to use format, that can be managed and published.

### ■ SOLUTION

Exaquantum Report Manager (Exaquantum/RM) enables authorized users to create scheduled Microsoft Excel reports using Exaquantum Historian and other database data sources.

Reports can be emailed to one or more people, printed, stored and/or published for access from Exaquantum/Web users.

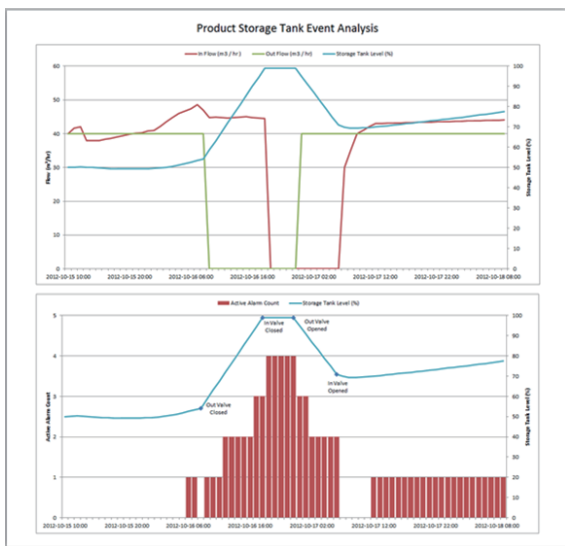
Microsoft Excel provides the ideal platform to consolidate multiple sources of data into a meaningful reports, which is both flexible and easy to use.



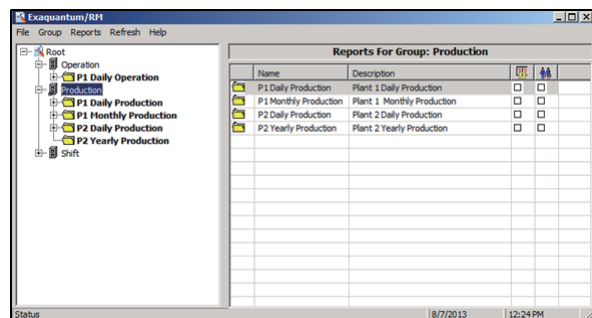
F02E.ai

### ■ KEY FEATURES

- Flexible, easy to use interface
- The full power of Microsoft Excel enhanced with the Report Manager Excel add-in
- A report can be linked to multiple schedules
- Unattended report creation into a defined folder
- Automated emailing of reports
- Automated printing of reports
- Automated publishing of reports accessible from Exaquantum/Web users
- Report templates can be grouped within folders to provide flexible management
- Each report can be formatted as a Microsoft Excel workbook, PDF document and/or XPS document
- Reports can be published for easy access from Exaquantum/Web users
- Up to a thousand columns of data supported



F01E.ai



F03E.ai

## ■ HARDWARE AND SOFTWARE REQUIREMENTS

### Minimum Hardware and Software Specifications

Component	Minimum Hardware Specifications
Exaquantum/RM Server	As listed in the Exaquantum R3.01 GS 36J04A10-01E for an Exaquantum Server
Exaquantum/RM Excel add-in	As listed in the Exaquantum R3.01 GS 36J04A10-01E for an Exaquantum Exaquantum/Explorer Clients

Component	Software Specifications
Exaquantum/RM Server	As listed in the Exaquantum R3.01 GS 36J04A10-01E for an Exaquantum Server
Exaquantum/RM Excel add-in	As listed in the Exaquantum R3.01 GS 36J04A10-01E for an Exaquantum/Explorer Clients

The Exaquantum/RM Release Notes provide exact details of the supported hardware and software.

## ■ MODELS AND SUFFIX CODES

### Exaquantum/RM Product

		Description
<b>Model</b>	NTPC040	Exaquantum/RM Product
<b>Suffix Codes</b>	-S	Basic Software License
	1	New Order (with Media)
	1	English version
	-SV01	Exaquantum/RM first Exaquantum Server License, per site
	-SA□□	Enter the number of additional Exaquantum Server Licenses (per site) (01 - 99)
-EA□□	Enter the number of new or additional per-seat Excel add-in Licenses (01 - 99)	

### Maintenance Service for Exaquantum/RM

		Description
<b>Model</b>	NTMC040	Maintenance Service for Exaquantum/RM
<b>Suffix Codes</b>	-S	Annual Contract
	1	Always 1
	1	Always 1
	-SV01	Report Manager Server License (First Exaquantum server, per site)
	-SA□□	Report Manager Server License (Additional Exaquantum servers, per site) (01 - 99)
-EA□□	Enter the number of Report Manager Excel add-in Licenses (01 - 99)	

## ■ ORDERING INFORMATION

Specify model and suffix codes.

## ■ TRADEMARKS

- Exaquantum, Exaopc, and CENTUM are registered trademark of the Yokogawa Electric Corporation.
- Other company names and product names mentioned in this General Specification are registered trademarks of their respective companies.