

General Specifications

NTPC040 Exaquantum Report Manager



GS 36J40E10-01EN

■ PROBLEM

Plant personnel often require detailed analysis of data collected by their Exaquantum Historian and other database sources to identify problems, reduce plant maintenance and improve production.

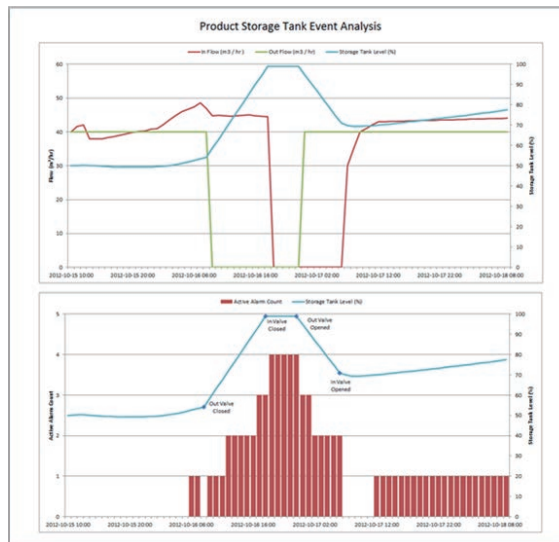
A key problem to performing this type of data analysis is the ability to retrieve large quantities of data from multiple sources into a single, easy to use format, that can be managed and published.

■ SOLUTION

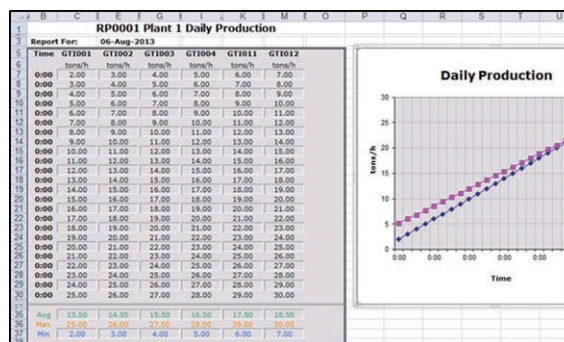
Exaquantum Report Manager (Exaquantum/RM) enables authorized users to create scheduled Microsoft Excel reports using Exaquantum Historian and other database data sources.

Reports can be emailed to one or more people, printed, stored and/or published for access from Exaquantum/Web users.

Microsoft Excel provides the ideal platform to consolidate multiple sources of data into a meaningful reports, which is both flexible and easy to use.



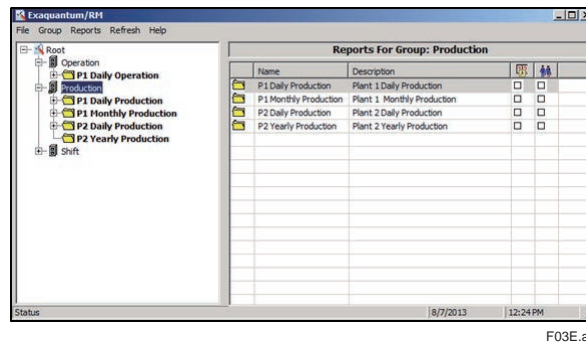
F01E.ai



F02E.ai

■ KEY FEATURES

- Flexible, easy to use interface
- The full power of Microsoft Excel enhanced with the Report Manager Excel add-in
- A report can be linked to multiple schedules
- Unattended report creation into a defined folder
- Automated emailing of reports
- Automated printing of reports
- Report templates can be grouped within folders to provide flexible management
- Each report can be formatted as a Microsoft Excel workbook, PDF document and/or XPS document
- Reports can be published for easy access from Exaquantum/Web users
- Up to a thousand columns of data supported



■ HARDWARE AND SOFTWARE REQUIREMENTS

Minimum Hardware and Software Specifications

Component	Minimum Hardware and Software Specifications
Exaquantum/RM Server	<p>For detailed specification information, refer to the following description in "Exaquantum GS (GS 36J04A10-01E)."</p> <p>Hardware:</p> <ul style="list-style-type: none"> ● Hardware Operating Environment "Exaquantum Server" <p>Software: (*1)</p> <ul style="list-style-type: none"> ● Software Operating Environment "Exaquantum Server" <p>For detailed supported revision, please refer to "GS 36J40W10-01EN."</p>
Exaquantum/RM Excel add-in	<p>For detailed specification information, refer to the following description in "Exaquantum GS (GS 36J04A10-01E)."</p> <p>Hardware:</p> <ul style="list-style-type: none"> ● Hardware Operating Environment "Exaquantum User PCs" <p>Software: (*1)</p> <ul style="list-style-type: none"> ● Software Operating Environment "User PCs for Exaquantum/Explorer, Exaquantum/Web Client" <p>For detailed supported revision, please refer to "GS 36J40W10-01EN."</p>

*1: Microsoft 365 (32-bit versions and 64-bit versions) and Office 2019 (32-bit versions and 64-bit versions) are not supported in referred GS.

The Exaquantum/RM Release Notes provide exact details of the supported hardware and software. If RM will be installed on a different version of Exaquantum, please contact Yokogawa for assistance.

■ MODELS AND SUFFIX CODES

Exaquantum/RM Product

		Description
Model	NTPC040	Exaquantum/RM Product
Suffix Codes	-S	Basic Software License
	1	Always 1
	1	English version
	-SV01	Exaquantum/RM first Exaquantum Server License, per site
	-YYYY	Select an Option Code
Option Codes	/SA□□	Enter the number of additional Exaquantum Server Licenses (per site) (01 - 99)
	/EA□□	Enter the number of new or additional per-seat Excel add-in Licenses (01 - 99)

Maintenance Service for Exaquantum/RM

		Description
Model	SV3NTMC040	Maintenance Service for Exaquantum/RM
Suffix Codes	-S	Annual Contract
	1	Always 1
	1	Always 1
	-SV01	Report Manager Server License (First Exaquantum server, per site)
	-YYYY	Select an Option Code
	-N	New
	-R	Renewal
Option Codes	/SA□□	Report Manager Server License (Additional Exaquantum servers, per site) (01 - 99)
	/EA□□	Enter the number of Report Manager Excel add-in Licenses (01 - 99)

■ ORDERING INFORMATION

Specify model and suffix codes.

■ TRADEMARK ACKNOWLEDGMENT

The names of corporations, organizations, products and logos herein are either registered trademarks or trademarks of Yokogawa Electric Corporation and their respective holders.