

General Specifications

Model NTPC043
Exaquantum Auto Trend



GS 36J40E13-01EN

PROBLEM

It is often very difficult for operators to obtain the required process information to assist them with making quick and appropriate plant management decisions.

SOLUTION

Exaquantum Auto Trend (Exaquantum/AutoTrend) provides the ability to display system-wide, real-time and historical trend information for use by both operators and management.

BENEFITS

- Operators are able to view long-term historical process data directly accessed from their HISs (Human Interface Stations) to improve operations.
- A complete picture of production and process issues can be obtained by viewing the Alarms & Events related to the process trend data for more effective decision making.
- Repeated known issues can be quickly diagnosed using predefined settings allowing operators to be more effective.
- Trends can be overlaid or stacked for more efficient process plant data analysis.

KEY FEATURES

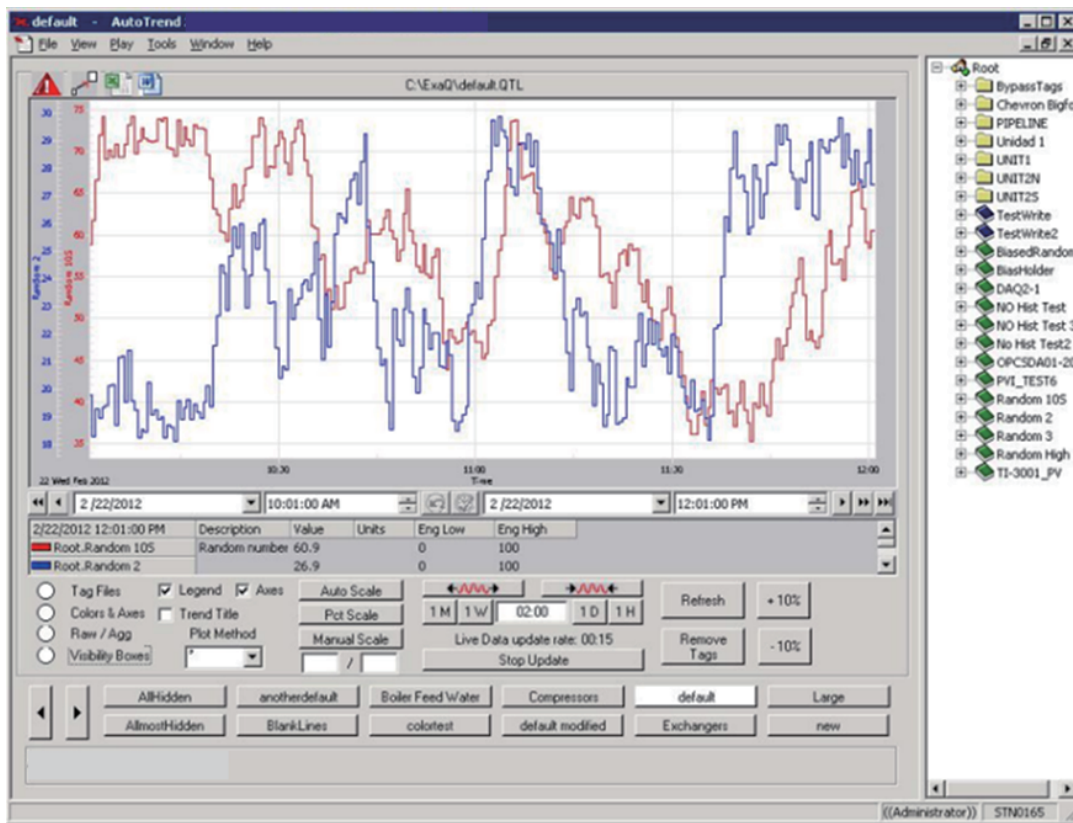
- Ability to select and scale process trends.
- Each user can configure trends accessible at any time from any Exaquantum/Explorer enabled PC.
- One-click generation of Microsoft Excel and Microsoft Word reports.
- Users can quickly create trend groups by dragging and dropping tags (data points) from the tag hierarchy tree.
- Custom navigation buttons can be configured.
- Users can print the currently displayed screen.

INTRODUCTION

Exaquantum/AutoTrend allows DCS operators to open pre-configured trends containing Exaquantum process data to provide an effective interface for configuring and managing trend information and reports.

Custom controls are available to make tasks more convenient and user experience is enhanced significantly by providing easy-to-use trend display manipulation, one-click switching between trends and report generation option for Microsoft Excel and Word.

Exaquantum/AutoTrend is primarily started from a HIS screen by displaying a trend for the selected tag.



F01E.ai

■ HARDWARE AND SOFTWARE REQUIREMENTS

Minimum Hardware and Software Specifications

Component	Minimum Hardware Specifications
Exaquantum/ AutoTrend Server	As listed in the Exaquantum R3.01 GS 36J04A10-01E for an Exaquantum Server
Exaquantum/ AutoTrend Web Server	As listed in the Exaquantum R3.01 GS 36J04A10-01E for an Exaquantum Web Server
Exaquantum/ AutoTrend Web Clients	As listed in the Exaquantum R3.01 GS 36J04A10-01E for an Exaquantum Web Client

Component	Software Specifications
Exaquantum/ AutoTrend Server	As listed in the Exaquantum R3.01 GS 36J04A10-01E for an Exaquantum Server
Exaquantum/ AutoTrend Web Server	As listed in the Exaquantum R3.01 GS 36J04A10-01E for an Exaquantum Web Server
Exaquantum/ AutoTrend Web Clients	As listed in the Exaquantum R3.01 GS 36J04A10-01E for an Exaquantum/Web Client

■ MODELS AND SUFFIX CODES

Exaquantum/AutoTrend Product

		Description
Model	NTPC043	Exaquantum AutoTrend Product
Suffix Codes	-S	Basic Software License
	1	New Order (with Media)
	1	English version
	-B1	AutoTrend Server License includes 5 AutoTrend per-Seat User Licenses
	-YY	Select an Option Code
Option Codes	/P□□	Enter the number of additional AutoTrend per-Seat User Licenses (01 - 99)
	/C□□	Enter the number of AutoTrend Concurrent User Licenses (01 - 99)

Maintenance Service for Exaquantum/AutoTrend

		Description
Model	NTMC043	Maintenance Service for Exaquantum AutoTrend
Suffix Codes	-S	Annual Contract
	1	Always 1
	1	Always 1
	-A1	AutoTrend minimum AMC
	-B1	AutoTrend Base Product
	-YY	Select an Option Code
Option Codes	/P□□	Enter the number of AutoTrend per-Seat User Licenses (01 - 99)
	/C□□	Enter the number of AutoTrend Concurrent User Licenses (01 - 99)

■ ORDERING INFORMATION

Specify model and suffix codes.

■ TRADEMARKS

- Exaquantum, Exaopc, and CENTUM are registered trademarks of the Yokogawa Electric Corporation.
- Other company names and product names mentioned in this General Specification are registered trademarks of their respective companies.