

# General Specifications

## Model NTPC041 Exaquantum Graphical Framework



### GS 36J40E20-01EN

#### ■ PROBLEM

The ability to create a common hierarchy of graphical screens and run-time features accessible by all authorized users is time consuming, inefficient and difficult to manage. These often include requirements to provide adequate screen navigation with linked trend and report selections.

#### ■ SOLUTION

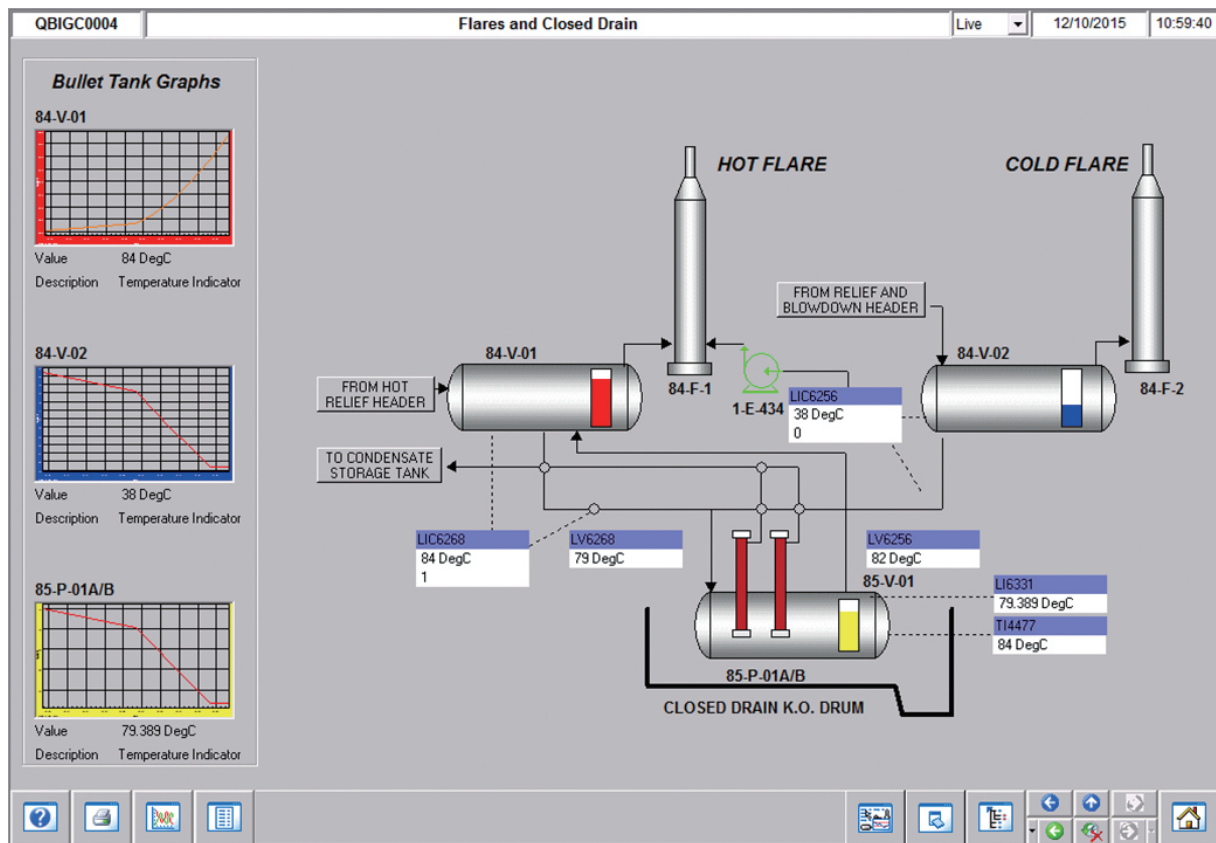
Exaquantum Graphical Framework (Exaquantum/GF) provides common user access facilities across all Exaquantum/Explorer screens. These screens can be accessed by supervisors and managers needing to view their plant's processes.

Screen interrelationships and linked features such as access to screen specific Microsoft Excel reports and trends provide in-depth access to key information.

Screens are grouped within a plant hierarchy to enable quick access to areas of concern with the ability to replay historical data.

#### ■ KEY FEATURES

- Dedicated interface to configure the plant hierarchy
- Analyze past plant activities by using the History Replay facility to control the time periods of trends and process data displayed for the current graphic
- User access to pre-configured trends assigned to the displayed graphic
- User access to pre-configured Microsoft Excel reports assigned to the displayed graphic
- Each user can configure up to 16 personal trends accessible from any Exaquantum/Explorer enabled PC
- Users can navigate directly to any graphic by selecting the required graphic from the hierarchal graphic list
- User efficiency is increased by being able to rapidly move between displayed graphics via navigation (current and historical) buttons
- Drag & drop process data from the displayed graphic and/or the Exaquantum Data Selector onto an always-on-top trend screen
- Ability to search for a graphic name
- Ability to print the currently displayed screen
- Ability to switch from live mode to history mode



F01E.ai

## ■ HARDWARE AND SOFTWARE REQUIREMENTS

### Minimum Hardware and Software Specifications

Component	Minimum Hardware and Software Specifications
<b>Exaquantum/GF Server</b>	<p>For detailed specification information, refer to the following description in "Exaquantum GS (GS 36J04A10-01E)."</p> <p>Hardware:</p> <ul style="list-style-type: none"> <li>● Hardware Operating Environment "Exaquantum Server"</li> </ul> <p>Software:</p> <ul style="list-style-type: none"> <li>● Software Operating Environment "Exaquantum Server"</li> </ul> <p>For detailed supported revision, please refer to "GS 36J40W10-01EN."</p>
<b>Exaquantum/GF Clients</b>	<p>For detailed specification information, refer to the following description in "Exaquantum GS (GS 36J04A10-01E)."</p> <p>Hardware:</p> <ul style="list-style-type: none"> <li>● Hardware Operating Environment "Exaquantum User PCs"</li> </ul> <p>Software:</p> <ul style="list-style-type: none"> <li>● Software Operating Environment "User PCs for Exaquantum/Explorer, Exaquantum/Web Client"</li> </ul> <p>For detailed supported revision, please refer to "GS 36J40W10-01EN."</p>

The Exaquantum/GF Release Notes provide exact details of the supported hardware and software.

If GF will be installed on a different version of Exaquantum, please contact Yokogawa for assistance.

## ■ MODELS AND SUFFIX CODES

### Exaquantum/GF Product

		Description
<b>Model</b>	NTPC041	Exaquantum/GF Product
<b>Suffix Codes</b>	-S	Basic Software License
	1	Always 1
	1	English version
	-SV□□	Enter the number of Exaquantum/GF Server Licenses (01 - 99)
	-YYYY	Select an Option Code
<b>Option Codes</b>	/EP□□	Enter the number of new or additional Exaquantum/Explorer per-seat user Licenses (01 - 99)
	/EC□□	Enter the number of new or additional Exaquantum/Explorer 2:1 concurrent user Licenses in (01 - 99)

### Maintenance Service for Exaquantum/GF

		Description
<b>Model</b>	SV3NTMC041	Maintenance Service for Exaquantum/GF
<b>Suffix Codes</b>	-S	Annual Contract
	1	Always 1
	1	Always 1
	-SV□□	Enter the number of Exaquantum/GF Server Licenses (01 - 99)
	-YYYY	Select an Option Code
		-N
	-R	Renewal
<b>Option Codes</b>	/EP□□	Enter the number of Exaquantum/Explorer per-seat user Licenses (01 - 99)
	/EC□□	Enter the number of Exaquantum/Explorer 2:1 concurrent user Licenses (01 - 99)

## ■ ORDERING INFORMATION

Specify model and suffix codes.

## ■ TRADEMARKS

- Exaquantum, Exaopc, and CENTUM are either registered trademarks or trademarks of Yokogawa Electric Corporation.
- All other company or product names appearing in this document are trademarks or registered trademarks of their respective holders.