

General Specification

Exaquantum Operator Trending Module



GS GMSCD0501-01E

The Problem

Users need to be able to easily create and display System wide and User defined trend groups that are integrated with Alarm and Events.

The Solution

Exaquantum's Operator Trending Module (OTM) allows DCS operators and Exaquantum/Explorer users to select and display group based trends.

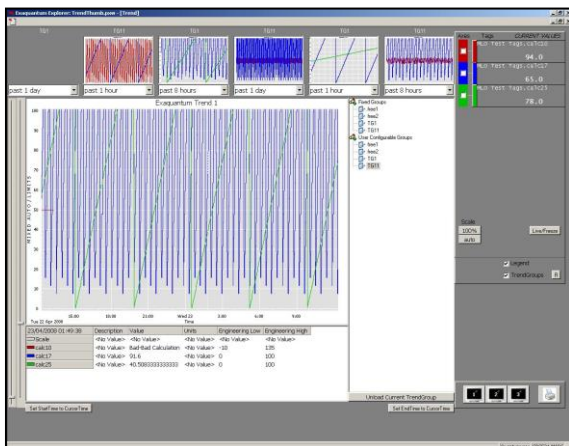
OTM is designed to provide DCS operators with a DCS 'look and feel' user interface.

Benefits

- Predefined timescales and manual settings allow users to quickly locate problem areas.
- By relating Alarms & Events to trend areas of interest, users are able to obtain a more complete picture of problems.
- Ability to export trend data to the clipboard for further analysis in Excel.
- The Trend Groups hierarchy tree allows users to change tags defined in trend groups.
- Create Trends Groups quickly by using the Drag and Drop feature of the Exaquantum Data Selector.
- Yokogawa HISs (Human Interface Stations) can have an OTM Toolbar Menu and OTM trends can be associated with HIS graphics.

Key Features

- Editor screen to create System wide and User specific trend groups.
- Integrated display of trends with Alarms and Event data screen.
- Thumbnail trends screen with quick switching between trend groups.
- Intelligent switching between raw and aggregated data provides fast response times.
- Trends can be displayed on large wall screens.



Typical Thumbnails Trend Screen with the Trend Hierarchy Tree displayed

Hardware Software Requirements

OTM is installed on an Exaquantum R2.85 server and uses Exaquantum/Explorer R2.85 clients.

Models and Suffix Codes

Table: Exaquantum/OTM Licenses

| Model | | Description |
|--------------|---------|--|
| GMSCD05 | | Operator Trending Module |
| Suffix Codes | -S | Basic Software License |
| | 1 | New Order (with Media) |
| | 1 | English version |
| | -B1 | Base Package that includes 5 OTM per-Seat User Licenses |
| | -YY/P□□ | Enter the number of additional Exaquantum/Explorer per-seat user Licenses in □□ |
| | -YY/C□□ | Enter number of new or additional Exaquantum/Explorer 2:1 concurrent User Licenses in □□ |

Table: Exaquantum/OTM Maintenance Service

| Model | | Description |
|--------------|-------|--|
| GMSCD80 | | Exaquantum/OTM Maintenance Service |
| Suffix Codes | -S | Annual Contract |
| | 1 | Always 1 |
| | 1 | Always 1 |
| | -5A1 | OTM minimum AMC |
| | -5B1 | OTM Base Package |
| | -5P□□ | Enter number of additional Exaquantum/Explorer per-seat user Licenses in □□ |
| | -5C□□ | Enter number of new or additional Exaquantum/Explorer 2:1 concurrent User Licenses in □□ |

Trademarks

Exaquantum, Exaopc and CENTUM are registered trademarks of the Yokogawa Electric Corporation.

Microsoft's Windows family of operating systems, Word, Excel, Office 2010, Office 2013 and SQL Server 2012 are trademarks or registered trademarks of the Microsoft Corporation.

All other company names and product names mentioned in this general specification are registered trademarks of their respective companies.